

Lick Creek

Orienteering map 1:15,000 scale 5 meter contour interval

CASCADE ORIENTEERING CLUB
 P.O. Box 31375
 Seattle, WA 98103
 Website: www.cascadecoc.org

This map is limited to personal, non-commercial use. If you wish to use this map for a group activity or to resell this map for any purpose, please obtain permission from Cascade Orienteering Club (info@cascadecoc.org). Please follow all applicable land use rules and stay out of all private property and other forbidden areas indicated on this map. The map is current based on the version date on the map.

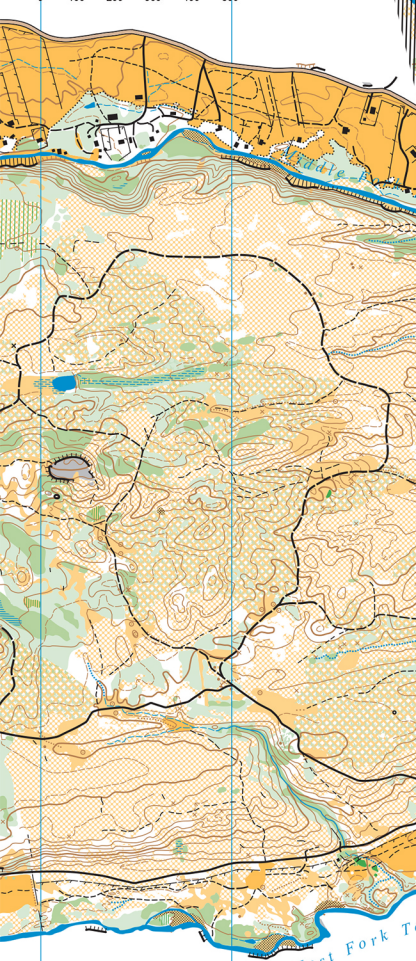
magnetic north

photogrammetry: Ivar Helgesen
 fieldwork and cartography: Georgy Kuntzevich, Aug-Sep 1997
 minor updates and layout: Eric Bone, 4/2011, 8/2010, 5/2015
 Mark Donnie, 4/2009

© 2015 Cascade Orienteering Club. Do not copy without authorization.

This map was produced with assistance from Orienteering USA
www.orienteeingusa.org

scale in meters



Lick Creek				
Sample Web Course				
Adv. Beginner	3.4 km			
Start:				
1	101			Stony ground
2	102			Hill
3	103			Special item
4	104			Spur
5	105			Thicket
6	106			Hill
7	107			Path junction
8	108			Stony ground
9	109			Path and ditch crossing
10	110			Bend in path
				Navigate 150 m to finish

Legend

	paved road		contour, index contour		marsh, seasonal or indistinct marsh
	improved unpaved road		form line, slope tag		forest of good runnability
	unpaved road		earth bank, dry ditch		vegetation: slow run, difficult to run, fight
	old road, footpath		rootstock, small knoll		undergrowth or slash: slow run, difficult to run
	very old road, small path		small depression, pit		open land, rough open land
	indistinct old road or path		cliff: passable, impassable		land with scattered trees: open, rough open
	fence: crossable, ruined		boulder: small, large, cluster		open sandy ground or area of river gravel
	power line		bare rock, stony ground		distinct vegetation boundary
	logging debris piles		pond, river		rough open land with scattered bushes
	log structure or heavy equipment		stream, seasonal stream		
	small building or shelter, ruin		spring, narrow marsh		

magnetic north